

# THE MCE TIMES

## IMPORTANT DATES

### December

**Sunday 17th**

Lego Visit @ MCE – Pre-  
Nursery – Year 2

**Monday 18th**

Lego Visit @ MCE– Year 3 –  
Year 6

**Tuesday 19th**

Reports Issued to Parents

**Tuesday 19th**

Pre-Nursery Year 2 Winter  
Concert

**Tuesday 19th**

Year 3 – Year 10 Winter Concert

**Tuesday 19th**

FoMCE Christmas Bazaar

**Wednesday 20th**

Class Parties

**Wednesday 20th**

Foster House Dress Up Day

**Wednesday 20th**

IGCSE/IB Information session

**Thursday 21st**

Farewell Assembly  
Term 1 Ends – Half day

## IMPORTANT DATES

### January

**Monday 8th**

Term 2 Starts



Thursday 14<sup>th</sup> December 2017

Dear Parents and Friends of Malvern College Egypt

There will be a pictorial MCE Times next week to showcase all our final week of term events.



### Change to Winter Concert and Christmas Bazaar Dates – NOW Tuesday 19<sup>th</sup> December

The reason for the postponement is that the lights are not ready in the theatre and the children do not have enough time to rehearse. I am not prepared to put on a second rate concert and potentially embarrass children who are not ready to perform. My apologies but this decision puts our students first.



### Friends of Malvern College Egypt Christmas Bazaar – Tuesday 19<sup>th</sup> December

Please do come along and enjoy the Christmas Bazaar. There are some outside vendors as well as FoMCE tables. Please do make sure that your child also has some money that day as each class will be able to visit throughout the day.



### **Foster House Charity Dress-Up Day - Wednesday 20<sup>th</sup> December Festive or Frozen for Foster**

All students may pay a minimum of 10 LE to wear "Festive or Frozen for Foster" clothing (Christmas or winter themed clothes). Money collected will be donated to the Foster House Charity, ESMA. ESMA care for injured and abandoned animals, providing medical care and re-homing. At Malvern College Egypt, we support this charity as it is important that we teach our children to show respect and kindness to all living things.

END  
OF  
TERM

### **Final Day of Term - Thursday 21st December**

All children should be in full uniform, including blazer in Year 3 and above, as we have a formal assembly on that day. School will finish at 12 midday.

### **Friends of Malvern College Egypt – Positions Available**

If you would like to join the Friends of Malvern Committee, there a number of positions available. Please contact Mai Sharawy at [mai@radamis.com](mailto:mai@radamis.com) for further details.



### **One Way Road System Now at the College 10KMH SPEED LIMIT – DROP OFF ARRANGEMENTS**

We will now be operating a one way system into and out of the College. Parents access as always from behind the College and may now drop their children off at the front of the College building in one of the designated bays. You then leave the College Road at the Secondary School end directly onto the Service Road.

Please drive slowly as some people have been driving very quickly endangering our children.

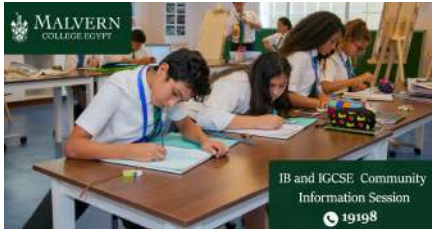
### **One Way Road System Now at the College - PARKING ARRANGEMENTS**

The one way system into and out of the College now means that parking is available for parents on both sides of the side road. You may also park **on the side of the service road** which is currently blocked off to traffic. Please listen to security who are there to help you park.

### **College/Parent Partnership and Trust**

What has made MCE such a success is the genuine partnership we have between parents and the College. It is about working together as a team (*see the Malvern Quality on Collaboration below*). Unfortunately, a number of parents are still not using the correct channels when they have an issue they want to address. They are not being collaborative, they are not being part of the team and they are destroying the partnership that we have built. Class/form teachers are your contact for minor issues, Heads of School for more serious issues. *We will then solve the problem for you immediately.*

If you do not use these channels, then officially there isn't a problem and we cannot solve it as we do not know about it. As a result, your problem then grows. Using your contacts/friends is an unofficial channel that MCE does not recognise and we will be unable to help - *if you do not contact us, it is just gossip!*



### **Explanation of the difference Between IGCSE, A Levels and IBDP Information Session – Wednesday 20<sup>th</sup> December 10am**

This session is to explain the difference between these three examination courses to alleviate any misunderstandings. Please come along, if you are one of our parents.

### **Christmas Presents for Teachers**

While everyone likes to receive presents at Christmas time, please do not give any individual gifts to teachers and co-teachers for obvious reasons. Your class reps should be collecting money to have a one collective gift from all the parents.



### **Lost Property**

All items will be laid out for students and parents to look at during the day of the Christmas Bazaar and Winter Concert on December 19<sup>th</sup>. After that, items will be given away to charities.



### **Class Parties – Wednesday 20<sup>th</sup> December in the Afternoon**

Class reps should be organising this with parents.

### **CCA's End Thursday 14<sup>th</sup> December**

### **Open Day for Prospective Parents - 16<sup>th</sup> December – 11am**

Our next Open Day is Saturday 16<sup>th</sup> December. If you have friends or colleagues moving to Cairo or thinking of moving school, please

introduce them to the College admissions team [Admissions@malverncollege.edu.eg](mailto:Admissions@malverncollege.edu.eg)



**College Guiding Statements - Our focus guiding statement next week is:**

**CGS 6: The College prepares children to live their lives honestly with a spirit of respect for themselves and others**



We believe it is important for our students to have a firm commitment to deep-rooted values in order to nurture *principled* individuals who act with honesty, integrity, respectful manners; as well as being flexible, pragmatic and open to new ideas. The College expects its students to be *open-minded* and respectful of the diversity of our community, including themselves.

### Malvern Qualities

I ask you to discuss these with your children to reinforce what we are trying to achieve at the College. Next week's focus is on Collaboration which is below:

#### Collaboration

Demonstrating an awareness that collaboration is a vital skill in society. Working with others to bring about the greater good and to offer service. Showing generosity towards other opinions and ideas and an ability to recognise that other ideas may be better than one's own. Working together to learn.

### Upcoming Events

Please note that these dates do change. It is colour coordinated for you:

Parent Information Session

Sporting Event

Holiday

Educational Visit

DECEMBER	EVENT	TIME
Sunday 17	Lego Visit @ MCE – Pre- Nursery – Year 2	All Day
Monday 18	Lego Visit @ MCE– Year 3 – Year 6	All Day
Tuesday 19	Reports Issued to Parents	
Tuesday 19	Pre- Nursery – Year 2 Winter Concert	
Tuesday 19	Year 3 – Year 10 Winter Concert	
Tuesday 19	FoMCE Christmas Bazaar	
Wednesday 20	Class Parties	PM
Wednesday 20	Foster House Dress Up Day	
Wednesday 20	IGCSE/IB Information Session	10:00
Thursday 21	Farewell Assembly	10:00
	Term 1 Ends – Half day finish 12:00	12:00

Enjoy the weekend with your children

Duncan Grice  
Headmaster

## Primary School News from Johnnie Kittermaster – Head of Primary School

It has been a long hard term and I know that the students and staff are ready for the holidays. I have been delighted with the progress that the children have made both academically and socially. Our new students at the beginning of term settled in quickly and it seems as though they have been with us from the start.



Our student leadership team have been well led by our Head Boy and Head Girl and well supported by the Primary School Prefects and House Captains. Year 6 have developed a good work ethic and have grown in maturity proving that they are good role models to the rest of the Primary School.

The Winter Concerts promise to be wonderful and it is lovely to be able to use the theatre which is a marvellous facility.

I encourage you to get your children to read on a daily basis in the holidays and to practice their number bonds and times tables.

I am sure that you would like to join me in thanking the teaching staff for all that they do at Malvern College Egypt, not just with their teaching but their fabulous pastoral care and other skills that they demonstrate in CCAs. Our Co Teachers have been amazing again and demonstrate a passion for all that they do. I would also like to thank everyone who helps us at the school from the drivers and bus matrons, to our wonderful Filipino Nannies, the cleaners, our Medical Team and those that help us from Cilantro and Lite Bites. Our Administrative staff work tirelessly and I am grateful for all that they do as well.

Please can I remind you that Wednesday is a Charity dress up day for Foster and the class parties are on Wednesday afternoon. Thank you to the Class Representatives for organising the food for these however due to allergies we cannot have any products with nuts.

On Thursday I would like to remind you that it is a best dressed day when we have our final assembly and say farewell to Mr Grice.



In 3M this week, children worked together to create a set of rules for any topic or subject. We discussed the reasons why rules are made and how they help everyone to be safe, as well as how they make things fair for all. Children presented their rules to the class and they received feedback from the others.

**STAR OF THE WEEK**

PNM	Holly Moore
PNA	Adam Abou Elfetouh
NM	Ismail Aboelabbas
NA	Yehia El Assra
NL	Layan Hamada
NV	Yehia Omran
RM	Ahmed Moustafa
RA	Hamza Abdel Hady
RL	Sean Todary
Year 1M	Shivani Paramakrishnan
Year 1A	Rayan Sherif
Year 1L	Omar El Kadim

I wish you all a restful holiday and if you are travelling I wish you a safe journey.

Merry Christmas!

**Early Years News from Sally Dibb-Holland – Head of Early Years**



Your children have been very busy this week practicing for our winter concert. From Pre-Nursery through to Reception, they have all been practicing on the stage in our wonderful new theatre. I am so excited to see them perform in front of you next Tuesday at 9am. I hope you are all able to join. Thank you all for your support in supplying festive costumes too!

Next week, we also have our class parties on Wednesday 20<sup>th</sup>, this is bring a dish day, which is coordinated by your class representatives. The children will come in dressed in their party clothes for this day. There is a FROZEN theme to the Foster charity day which is the same day, for a LE10 donation. We hope to have a visit from Santa too! Keep an eye out for his reindeers and sleigh bells!!



If you are shopping for new school bags or shoes over the College holidays, please would you buy a bag that is roughly 40cm tall and 30cm wide. Please try and find a back pack about this size, so that it is manageable for your child to carry. Please avoid the bags with handles and wheels as these don't fit into our cubby holes. Shoes with VELCRO rather than laces are also preferable as most of our children aren't able to tie their laces yet and loose laces are a trip hazard and dangerous. Your support with this is appreciated.

Thinking ahead to our Spring Term in January, please make an effort to ensure your children are in school by 7:45am. We really do start learning from 8am, and late children will be missing their phonics input which is so important in their learning and development.

## Secondary School News from Wayne Maher – Head of Secondary



### *Reflection and Belief in Yourself*

As a very busy term comes to a close it is often easy to only look forward to the holidays and not reflect on the achievements of the year so far. Year 7 and 8 students explored the concept of reflection during their assembly this week. As I look back over the term I can easily list 20 or 30 amazing achievements made by our students from huge improvements for individuals in subject assessments to amazing group performances in the House Singing competitions. I would further encourage all students and parents to try to look back over the term so far and recount, and maybe even write down, one or two personal achievements. The assembly also explored how students should use this reflection to build upon their self-belief. By acknowledging your past achievements it makes future hurdles or difficulties seem a little less daunting.



### *Paperless Reporting*

All parents in Secondary School should have received an email this week with regards to our methods for distributing end of term reports next week. Essentially to support our drive to be more environmentally friendly and give parents better access to information we are moving towards a paperless reporting system.

For this term Year 7, 9 and 10 will access their reports via the parent portal with no printouts sent home. Year 8 full reports with subject and tutor comments will still be printed and distributed as usual.



### *Non-Uniform and Class Parties*

Wednesday 20<sup>th</sup> December sees the Foster House non-uniform day merged with class parties. Parent reps have been asked to liaise with the tutors to arrange for their class to celebrate the end of the term together on Wednesday afternoon from 12:30 to 14:10 (buses leave school at 14:20. Food and drink should be delivered to the Tutor room with the student first thing in the morning or by parents at lunchtime. We cannot accept deliveries directly from food outlets and we must remind all parents that MCE is a NUT-FREE environment, so please do double check all items. The theme for the non-uniform is Festive or Frozen and we look forward to seeing some exceptional outfits on the day.

### *House Points*

As we near the end of the term, House competition events are heating up. Sanger might be out in front for the House Points but with some interesting results in the House Football competitions it is still almost anyone's to win. I am also delighted to announce that another student has reached the fantastic milestone of 100 House Points. Tim, in Year 10, has worked incredibly hard across his studies in the classrooms as

well as his efforts in the wider life of the school from the House competitions to supporting clubs. A great achievement in one term.

1 <sup>st</sup>	Sanger
2 <sup>nd</sup>	Elgar
3 <sup>rd</sup>	Lewis
4 <sup>th</sup>	Foster

Just also to note that Year 10 students have already collected more House Points this term than they did in the whole of Year 9 last year!!!!

## Sports News from Iain Driscoll – Director of Sport



The end of Term and the end of the football season has been reached and the end of season tournaments were a great way to see them out.

### *Football*

#### *U16 Girls @ New Cairo Schools Sports Partnership (NCSSP) Football Finals*

A total of six teams competed - NCBIS, CISE, TBS, EBIS, CES and MCE.

Results:

CISE 6 v 0 MCE

NCBIS 4 v 0 MCE

TBS 1 v 0 MCE

EBIS 0 v 2 MCE (Haia Selim & Hana Kamel)

This was a worthy way to end the day, in what was a steep learning curve for our girls. Despite being the youngest team in the tournament, with some our girls only 12 years old, we did not let ourselves down in terms of effort, perseverance and pride. Our ambition, resilience, collaboration and integrity, Malvern Qualities were apparent throughout the whole day.

#### *U11 Girls @ New Cairo Schools Sports Partnership (NCSSP) Football Finals*

TBS 0 v 0 MCE

CISE 0 v 0 MCE

BISM 0 v 1 MCE (Hala el Gebely)

EBIS 1 v 0 MCE

CES 0 v 0 MCE

NCBIS 0 v 0 MCE

*Our girls worked tirelessly for each other, behaved impeccably and demonstrated that when under pressure they can come together as a team and perform above expectations. A special mention must go to Hala El Gebely, Salma Helal and Malak Abdelmohsen.*





***U13 Girls @ New Cairo Schools Sports Partnership (NCSSP) Football Finals***

TBS	0 v 1	MCE
BISM	0 v 1	MCE
CISE	2 v 0	MCE
EBIS	1 v 1	MCE
MCE	0 v 0	MCE
NCBIS	1 v 0	MCE

Throughout the day all our girls demonstrated true Malvern spirit and resilience. A special mention to Malak Soliman, Saraa Ebfrachim and Haia Selim for outstanding performances.

***U11 Boys @ New Cairo Schools Sports Partnership (NCSSP) Football Finals***

The U11 boys had an enjoyable, and disappointing, end of season NCSSP Football Tournament.

EBIS	1 v 1	MCE (Youssef Fawzy)
BISM	1 v 1	MCE (Youssef Fawzy)
CISE	0 v 4	MCE (Youssef Fawzy x2, Marco Soliman, Yasseen Khairy)
CES	2 v 1	MCE (Yassin Fawzy)
NCBIS	2 v 1	MCE (Yassin Fawzy)

The boys must learn to deal with a defeat as a learning experience and not withdraw from advice or building their resilience. The improved team performance was rewarded with Marco Soliman being presented player of the tournament; this was reflective of his and MCE's improved determination. Well done to all who have played for MCE this term.

***U13 Boys @ New Cairo Schools Sports Partnership (NCSSP) Football Finals***

The students worked extremely hard from the start of the competition to the end, performing to the best of their abilities throughout each of the six games.

TBS	1 v 0	MCE
BISM	1 v 0	MCE
CISE	1 v 2	MCE
EBIS	3 v 0	MCE
CES	3 v 0	MCE
NCBIS	0 v 1	MCE

The following two games unfortunately resulted in 3-0 losses but a special mention to our goalkeeper Bishoy, who pulled off some fantastic saves. The sixth and final game saw Malvern beat the host team NCBIS 1-0 in a very entertaining and competitive match. The students of Malvern worked very hard throughout the day, displaying excellent resilience and determination and representing the school with

an excellent attitude and positive behaviour. Special mention to Bishoy Shenoda, our goalkeeper, who had an outstanding tournament.

This week was also the last week of the morning swim and football training. The morning sports program will restart in the new term. Please sign up for the morning sessions through the CCA program.

## Music News from Tina Marsh – Director of Music



### *Winter Concerts - Tuesday 19<sup>th</sup> December*

I do hope that you are all excited about attending the concerts next week. Please note the theatre is not open to parents until this date.

EYFS – Year 2 Concert at 9am. Please be seated by 8:50am.

KS2 – KS4 Concert at 5:30pm. Please be seated by 5:15pm. Children will remain in school. Full uniform please including blazers. Girls should be wearing blue socks or tights.

*So that parents are aware of our expectations for the performance, I thought I would share these now, so that parents are not offended if staff make these requests at the concerts.*



### *Social Media Sharing*

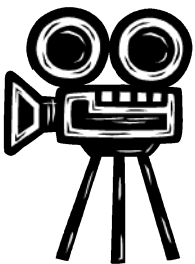
The MCE Facebook page will share an appropriate amount of photos from the concert. These will comply with our safeguarding policy. Please do not share personal photos of anyone other than your own child on your Facebook pages. Please do share the MCE pages as much as you like with family and friends to show off your child's talents.



CELL PHONES  
SILENT

### *Mobile Phones*

We expect that during the show all mobile phones are turned onto **silent mode** and not used throughout the performance.



### *Photography/Filming*

We understand that parents will want to video/record their child's performance:

1. Keep your recording focused on your child only.
2. Do not record the whole performance, only your child's performance.

3. If you are recording your child's performance, please stand at the back of the theatre to do this, so that you are not blocking the view for others. Other parents do not wish to watch the performance through your iPad / phone.
4. You will not be able to stand in the aisles as this will block other people's view. This is also a fire hazard.
5. We also ask that any photography or filming does not use a flash, as this will disrupt the performances and distract others in the audience.
6. Our official school photographer will be there recording and photographing the whole performance.



### *Instrumental Lessons*

New students have the opportunity to start lessons in January 2018. If you wish for your child to take part, and they are not already signed up, please contact [lamees.day@malverncollege.edu.eg](mailto:lamees.day@malverncollege.edu.eg) with the deposit by the end of term. Full payment will be required before lessons in January can start.

Just to clarify again, we offer instrumental lessons for students Year 2 and above. However, in exceptional cases some year 1 students may be permitted. Year 1 students are looked at on an individual basis, and in agreement with the instrumental teacher. The other condition is that the parent is willing to escort their child to and from the lesson each week. Lessons are on a rotational basis, so they are not the same time every week.

### *School Production CCA Sign Up*

Just a reminder that all students doing the School Production CCA this term, will automatically be placed on this in January. So they will only need to choose their Monday and Tuesday choices. Unfortunately, as the production is now cast, we cannot have any new additions to the CCA in January.